

Tideland Topics

Real People. Real Power.

Mobile app updated

Tideland's mobile app has been updated to include fingerprint recognition for Android users and facial recognition for IOS users.

Another big improvement: first-time app users no longer have to register via the online member portal.

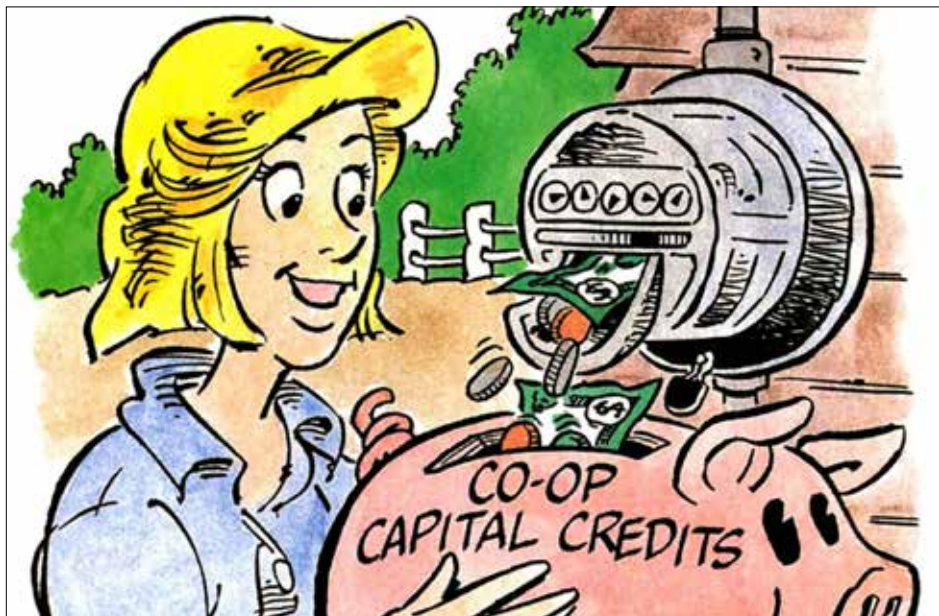
To download the app, search My Tideland on Google Play or the AppStore.



Member math: \$1.4 million

In November, Tideland's board of directors authorized a general retirement of \$800,000 in member capital. When combined with refunds to the estates of deceased members, capital credit refunds for fiscal year 2023 will total nearly \$1.4 million.

Details can be found in this month's Message to Members on Page G.





Space heater safety

Despite efficiency gains in home heating equipment, we continue to see electric space heaters being regularly used in Tideland-served homes. They are also a common sight in many office settings.

Aside from operating cost concerns, there are safety risks associated with the overuse of space heaters. Most household wiring is not designed to continuously operate a space heater, especially on the highest watt setting. If wiring becomes overheated, the insulation covering the wire gets soft and the weakened wire becomes a fire hazard. During energy audits we frequently spot evidence of burn marks or melting on outlet covers.

- Space heaters should never be plugged into extension cords or power strips.
- Use the lowest wattage setting if you plan to use the space heater for an extended period of time.

Continues on Page H



Middle Schoolers: Apply now for a summer basketball camp scholarship

Tideland is once again accepting applications for full scholarships to basketball camps at two North Carolina universities this summer.

Middle school boys can apply for a scholarship to attend the Carolina Basketball School at the University of North Carolina at Chapel Hill, and middle school girls can apply for a spot at the Wolfpack

Women's Basketball Camp held at North Carolina State University in Raleigh. The UNC camp will be held June 22-26. The NCSU camp will also be held in June, but specific dates are not yet available. Tideland will award one scholarship per camp.

The scholarships cover all expenses at the overnight camps, which provide a glimpse into life on a college campus. Campers

stay overnight in dorms, learn fundamental skills that will help them excel on and off the court and receive individual and group instruction from Division 1 coaches to enhance their basketball and team-building abilities.

To apply, **students must be a sixth or seventh grade student during the 2024-2025 school year** at a

qualifying school and reside in a Tideland EMC served household. Applicants will be judged on their academics, extracurricular activities and an essay.

The application period begins in January and applications must be submitted by March 31. To learn more and apply, visit tidelandemc.com/my-community/basketball-camp.



Touchstone Energy®

Sports Camp Scholarships

How CAPITAL CREDITS work

Tideland Electric Membership Corporation is a not-for-profit member-owned cooperative. Tideland members share in the ownership, construction, maintenance and prosperity of the co-op.

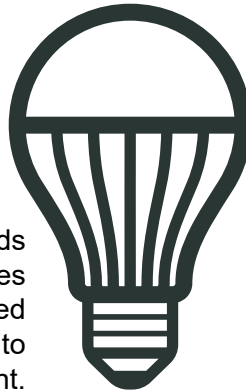


When a person establishes service with us, they become a member and are eligible for capital credits.



Capital credits represent a member's share of the cooperative's margins during the time they have membership.

At the end of each year, any funds (margins) remaining after expenses have been paid are allocated, based on percentage of electricity used, to the member's account.



The allocated funds are used as operating capital for system improvements and maintenance.



ALLOCATION

An allocation is made annually for each member, based on the amount of electricity purchased. An allocation is the member's share of the net margins. The co-op sets this money aside to be used as operating capital for improvements & maintenance over a period of years thus reducing co-op borrowing costs. Lowered borrowing costs mean lower electric rates.

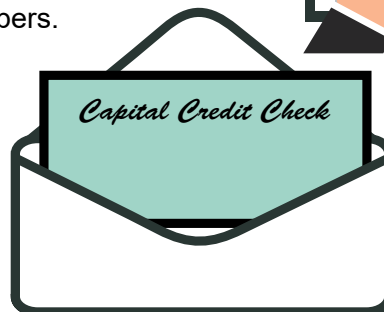


Annually, the board of directors evaluates Tideland's financial condition to determine if we can retire capital credits and if so, what dollar amount. Part of that equation is the amount of capital credits already refunded year-to-date to the estates of deceased members.



When the board elects to retire capital credits, we calculate the amount to pay each member based on a percentage of the member's allocation for the year of service being retired.

Checks are mailed to members due a retirement of \$50 or more. For amounts less than \$50 or in the case of a delinquent account, the credit is applied to the member's December electric bill. Qualifying FlexPay members receive their credit on Dec. 2.



Capital credits represent an important cooperative principle: **MEMBER ECONOMIC PARTICIPATION** along with the return of local dollars to our hometown communities.

RETIREMENT

A retirement is the amount a member receives back as a refund. It is a portion of the total allocation. When capital is no longer needed for operating expenses, it is retired. The amount paid is decided annually by Tideland's board of directors based on the financial needs of the cooperative.



Space heater math

Space heaters can play a useful and even cost-saving role when properly utilized. For example, briefly using a space heater in the morning while showering or getting dressed can be more cost effective than raising the thermostat to warm up your whole house when you just want the temperature increased in a small bathroom. However, using a space heater for prolonged periods or as a home's primary heating source can quickly increase your electric bill. Let's look at the math:

At a 1,500-watt setting, a space heater will cost 18¢ per hour to operate. At that setting for eight hours of use the cost is \$1.44. During a 30-day billing cycle that eight hours per day would consume \$43.20 worth of electricity. If used 24 hours a day for 30 days, that one single space heater would add \$129.60 to the monthly bill. And as noted on page B, overuse of a space heater can easily damage outlet wiring, contributing to a house fire.

One final note: all electric resistance space heaters are created equal in terms of "efficiency." A watt is a watt is a watt. The only real differentiation is related to safety features and thermostatic control options so choose wisely.

Resolve to reduce



Do a little. Save a lot. Everything you do, from flipping a switch to selecting a thermostat setting, can add up to big savings for your home or business.

Air Sealing

- Caulk around plumbing penetrations that come through walls beneath bathroom and kitchen sinks.
- Caulk wiring penetrations that lead from the crawlspace or into the attic.
- Remember to shut fireplace dampers when the fireplace is not in use.
- Weatherstrip and insulate your attic access door and knee-wall doors.
- Seal rim joist cavities in your crawlspace. Pay special attention to bay windows, which can be particularly leaky.
- Make sure all windows are properly shut and locked. (You'd be surprised to know how many open windows our energy auditors find during home visits).
- If you don't have storm windows or air-insulated windows, use plastic storm window kits for an inexpensive and surprisingly effective remedy. Be sure to get the kits

that require a blow dryer to heat shrink the plastic.

- Weatherstrip exterior doors and install door sweeps.

Water heating

- Set storage tank water heater temperatures at 120°F.
- Install water heater wrap per manufacturer's instructions.
- Limit showers to 5-7 minutes.
- Install low-flow shower heads.
- Fix leaks.

Lighting

- Upgrade to LED bulbs.
- Install motion sensing outdoor lights to reduce burn time or consider a dusk to dawn light sensing fixture.
- Give LED solar landscape lighting a try.

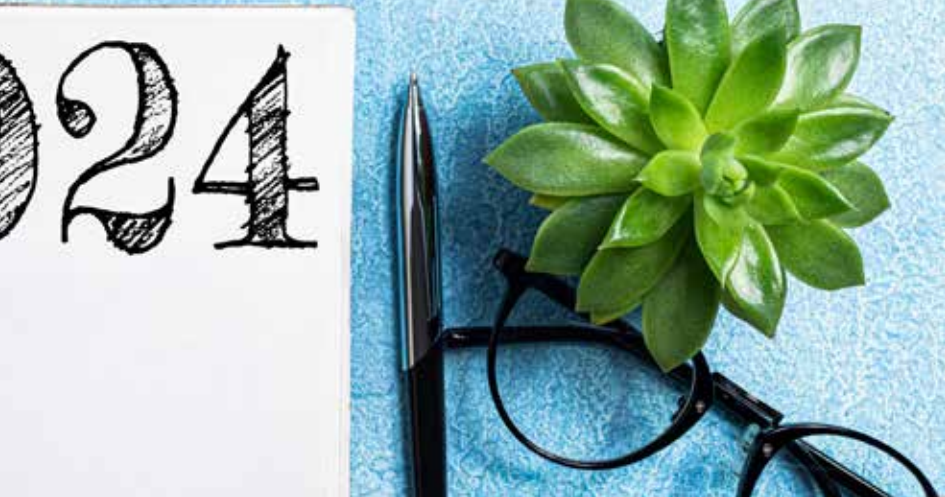
Ceiling Fans

- Fans cool people, not rooms. So remember to turn them off when rooms are unoccupied.

HVAC

- Have your unit regularly tuned up for maximum efficiency.
- Change HVAC filters monthly, and don't use heavily pleated filters unless your HVAC system's return was specif-

Reduce energy costs



ically sized for higher rates of filtration. Over-restricting return air could damage your system.

- Don't shut interior doors when using your central heat and air unless you have a zoned system or a dedicated return air register in the room. Doing so restricts indoor airflow back to the return and will result in increased outdoor air infiltration from cracks around windows and doors. It can also damage your system.
- • Have a heat pump? Then set the thermostat and forget it during heating season. We recommend a 68°F setting.
- If you have an electric furnace or baseboard heat then practicing thermostat set back at night or when the home is unoccupied is highly recommended.
- In summer, keep the air conditioning no lower than 78°F. If that seems a bit warm, work on lowering indoor humidity levels and supplement with fans when rooms are occupied.
- Check ducts for air leakage especially where the boot joins

the subfloor. If you live in a multisection manufactured home, pay close attention to the crossover duct and make sure it is sealed with a mastic paste or tape (not traditional duct tape).

Laundry

- Opt for cold water wash. Today's laundry detergents are usually formulated for cold water wash and it is the agitating action that is most effective in cleaning clothes.
- Clean your dryer's lint filter before the start of every load and be sure to clean your dryer vent on a regular basis. A clogged vent will not only significantly increase drying time, it also creates a fire hazard.

Knowledge is power

- Make this the year you routinely log into the Tideland member portal to view both your daily and hourly kilowatt-hour consumption.
- Enroll in high energy use alerts to prevent runaway energy consumption.

Rights-of-way maintenance schedule

Tideland has contracted with Gunnison Tree Service to trim trees in our rights-of-way.

During January, Gunnison crews will be trimming out the Engelhard substation 35kV circuit in Hyde County.

They will then move on to Pamlico County and begin work on the Merritt circuit along Highway 306, Hunnings Farm Road, and Paul Farm Road.

Lee Electrical line construction crews will be finishing work on the Maribel tap off of the Merritt circuit along Fentress Farm Road.

Thank you for your continued support of these maintenance and construction activities which are so important to public safety and system reliability.



Gunnison Tree Service crew
Photo: Darren Bauer, Tideland

UP, UP AND AWAY

CONSIDER ALTERNATIVES TO A BALLOON RELEASE

Everyone has great intentions when planning a balloon release. However, as soon as balloons are let go, they can go from sentiment to hazard.

ALTHOUGH BEAUTIFUL TO LOOK AT, BALLOONS CAN DAMAGE THE POWER GRID AND CAUSE POWER OUTAGES.

LATEX AND MYLAR BALLOONS AND ATTACHED STRINGS & RIBBONS CAN:

- Threaten birds and animals (via ingestion and entanglement).
- Harm marine life.
- Obstruct the flight path or cause damage to an airplane's engine.
- Cause ground and ocean trash.
- Create plastic pollution.

ACCORDING TO THE ROYAL SOCIETY FOR THE PREVENTION OF CRUELTY TO ANIMALS:

- What goes up, must come down: balloons will fall back to earth either semi-deflated or in tiny and hard-to-retrieve fragments.
- Only an estimated 5% of all released balloons return intact.
- Even if balloons are marketed as degradable, they may take several weeks to break down.

ALTERNATIVES TO BALLOONS:

- Blow bubbles.
- Light candles.
- Throw biodegradable confetti.
- Plant trees.
- Plant flowers.
- Paint stones.

Message to members

Close to \$1.4 million in member capital refunded in 2023

by **PAUL SPRUILL**
GENERAL MANAGER &
CHIEF EXECUTIVE OFFICER

In fiscal year 2023, Tideland Electric Membership Corporation retired nearly \$1.4 million in member equity through capital credit disbursements. Retirements to the estates of deceased members of the electric cooperative represented approximately \$596,506 of that total. Tideland's board of directors further authorized a general retirement of \$800,000 to those members and former members of the cooperative that received electric service in 1994 or 1995.

Capital credits represent member margins that are collected through electric bill revenues and reinvested in the cooperative's utility infrastructure. At the end of each year, Tideland's expenses are deducted from revenue to determine the cooperative's net operating margins for the year. Those margins are proportionally assigned to each Tideland EMC member as capital credits based on a percentage of what each member paid for electricity during the calendar year.

By utilizing member capital to maintain the electric system, Tideland is able to minimize its

reliance on outside lenders thus reducing borrowing costs for the entire membership.

The general retirement was issued through a combination of checks and electric bill credits during the month of December 2023.

Active account holders received a check if their electric account was

current at the time of distribution and if their refund was \$50 or more. All other Tideland members with active accounts received an on-bill credit if they had service with the co-op in either 1994 or 1995. Checks were mailed to former members at their last known address for refunds of \$50 or more. That's why it is important to keep the co-op updated about future address changes in the event you leave the Tideland service area.

Undelivered or unclaimed refunds are eventually escheated to the North Carolina Department of Treasury. You can search for unclaimed refunds by visiting nccash.com.

In the past decade, Tideland has retired \$12,156,081 in member equity.

A Decade of Refunds at a Glance	
2023	\$1,396,506
2022	\$1,430,911
2021	\$1,380,490
2020	\$1,078,000
2019	\$480,000
2018	\$1,246,848
2017	\$957,354
2016	\$1,112,409
2015	\$2,397,405
2014	\$676,158
TOTAL	\$12,156,081

E is for Education

Protect your Electric Bike and Electric Scooter

Lithium-ion batteries power many portable consumer electronics, electric vehicles, and even store power in energy storage systems. In normal applications, these batteries are safe, but if damaged or overheated, they can cause fires.

- Only use manufacturer-provided or authorized batteries and charging equipment. All equipment should be certified by a Nationally Recognized Testing Laboratory.
- Remove the battery or charging device from power once charging is complete to avoid overheating
- Keep batteries and charge them at room temperature. Issues can occur below 32° F or above 105° F
- Keep batteries and devices from heat sources or anything that can catch fire
- Do not store batteries in vehicles or direct sunlight
- All maintenance on batteries or e-mobility devices should be completed by a qualified professional

Discontinue using devices or batteries that:

- change in color
- change in shape
- have an unusual odor
- are leaking or smoke
- no longer charge



Scholar Dollars

Time to apply

Tideland EMC is accepting college scholarship applications from high school seniors in Beaufort, Hyde, Washington, Pamlico, Dare and Craven counties. Applicants must be the dependent of a Tideland EMC member.

The co-op will award eight \$1,000 scholarships. Two scholarships will be designated for students who plan to attend community college.

Students have until Friday, March 1, 2024, to apply. An application may be downloaded at tidelandemc.com.

For more information contact program coordinator Heidi Smith at 252.944.2410 or heidismith@tidelandemc.com.



*Real People.
Real Power.*

Tideland Topics

tidelandemc.com

BOARD OF DIRECTORS

J. Douglas Brinson, President
Clifton Paul, Vice President
Mark Carawan, Secretary
David Ipock, Treasurer
Rudy Austin, Garry Jordan,
Dawson Pugh, Paul Sasnett,
Wayne Sawyer & Charles Slade

GENERAL MANAGER & CEO

Paul Spruill

EDITOR

Heidi Jernigan Smith

Member Service

252.943.3046

24 Hour Outage Reporting & Automated Services

252.944.2400

Tideland EMC is an equal opportunity provider & employer

Holiday *Closing*

Our offices will be closed Monday, January 1. Our 24-hour call center will be fully staffed for outage reporting and account management.

2024

Winter *Reminder*

Remove window air conditioning units so windows can be properly closed.



spaceHeater

Continued from Page B

- If the breaker trips, don't ignore the warning. The circuit could be damaged or undersized for space heater use.
- Position the space heater away from the electrical outlet to prevent hot air from blowing back on the outlet which will further compromise outlet wiring.
- If you see burn marks on the outlet discontinue use of the outlet and call an electrician.
- Never leave a space heater unattended.
- Never run space heater cords underneath rugs or through doorways.
- Make sure space heaters are a safe distance away from draperies and household furnishings.

