

# Tideland Topics

*Real People. Real Power.*

## Electrification incentives

Be sure to take advantage of federal tax credits that you may be eligible for when filing your 2023 return. From upgrades to your electrical panel and home wiring to the installation of heat pumps, windows and doors, there's more reason than ever to electrify your life. Details on page 22.



## Scholarship deadline March 1

High school seniors have until Friday, March 1, to submit their college scholarship applications to the Tideland Electric Care Trust. The Trust will award eight scholarships: six to students attending a four-year college or university and two to students attending a community college or trade school. To apply visit [tidelandemc.com/my-community/college-scholarships](https://tidelandemc.com/my-community/college-scholarships).





## Beat the buzzer to apply for the 2024 Touchstone Energy Sports Camp Scholarship Program

Tideland EMC is currently accepting applications for full scholarships to renowned basketball camps at two North Carolina universities this summer.

Young men can apply for a scholarship to attend the Carolina Basketball Camp at the University of North Carolina at Chapel Hill (June 22-26), and young women can apply for a spot at the Wolfpack Women's Basketball Camp held at North Carolina State University in Raleigh (June 16-19). Please make sure you can attend those dates before applying!

To apply, students must be a rising sixth- or seventh-grade student during the 2024-2025 school year, residing in a Tideland EMC served home. Applicants will be judged on academics, extracurricular activities and an essay.

Applications must be submitted by March 31. To learn more, visit [tidelandemc.com](http://tidelandemc.com). You may also reach out to Heidi Smith at 252.944.2410.

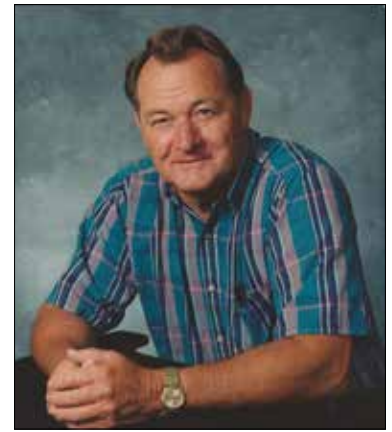
## Remembering Frank Billups

The Tideland family experienced another loss on Jan. 16 with the passing of retiree Frank Billups.

Frank was born on June 10, 1938, in Southampton County, Virginia where he attended Ivor High School.

By age 17, Frank was working for Carolina Telephone and Telegraph. That was the same year Hurricane Hazel, a Category 4 storm that ravaged the North Carolina coast.

He worked for Tideland EMC from 1966 until retiring in 1999 as the co-op's operations manager.



With utility crews from as far away as Louisiana and Florida assisting with repairs, Tideland needed as many experienced crew leaders as possible to escort and supervise visiting crews to work sites scattered across the system. Frank answered the call along with two other Tideland retirees: Edward Earl Everett and Harry Nixon.

When Frank reported for duty that day he left behind \$9,500 worth of roof damage to his own home, just 36 hours after a tornado passed overhead.



From left: Edward Earl Everett, Harry Nixon and Frank Billups in 2011 following Hurricane Irene

In the pre-dawn hours of Sunday, Aug. 28, 2011, there was a knock at Frank's door. It was Tideland's Steven Barber. He was sent to ask if Frank return to work for Tideland long enough to get power restored following Hurricane Irene. The hurricane had stalled in the Pamlico Sound and inflicted massive damage to Tideland's system. Many, including Frank, likened the damage to that of Hazel.

For the next four days, Frank led crews from Louisiana to restore power to homes in Washington areas of River Road, Pamlico Plantation, Pamlico Village, and Forest Hills. We remain grateful for his service.

In 1976, Frank married Ginger Courson who preceded him in death in 2021. Survivors include his sons Edward Kent Billups; Paul Andrews and wife, Dana; Jeremy Andrews and wife, Candace; his daughter Julie Marie Billups-Rattler and husband, Melvin, six grandchildren and four great grandchildren.



# Message to members

## Help us reap future savings through wise planting today

by **PAUL SPRUILL**

GENERAL MANAGER &  
CHIEF EXECUTIVE OFFICER

Tideland spends nearly \$2 million annually for rights-of-way maintenance. The lion's share of those dollars are for tree trimming and tree removal. If we divided that expense equally among all 24,118 member accounts, that would come to \$82.92 per metered service annually.

Tree trimming is vital to system reliability because trees are the leading cause of power outages on our system. That shouldn't be surprising given our coastal location and frequent weather events that can negatively impact tree health. A warming climate has also accelerated tree growth. As a result, Tideland went from a seven-year trim cycle to a five-year cycle in 2003. That's right: it takes five years for our contract crews to trim the entire system. Then the cycle begins again.

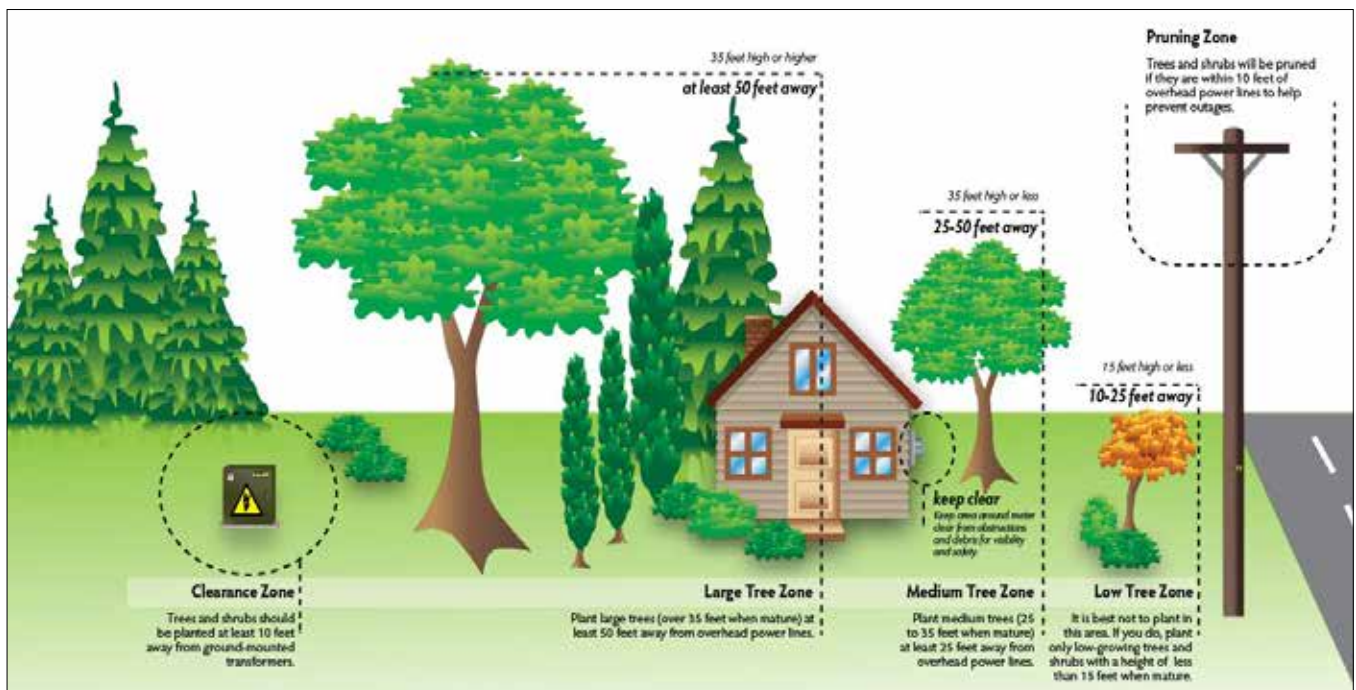
Tideland territory is home to the top two-ranked North Carolina counties for income derived by timber harvested and delivered to mills: Beaufort and Craven. In Beaufort County, 65% of the land area is timberland. In Craven County the figure is 58%. However, it is rare that trees within a managed forest cause power outages. Why? Because they are well maintained and harvested long before they might pose a hazard. In fact, when timberland related outages do occur they

are most often attributable to the harvesting operation itself when heavy equipment is operating in the vicinity of overhead wires.

Therefore, the most pressing areas of concern are yard trees and unmanaged forests. That's where **you** can help us tremendously.

When planting new trees, make sure they're a safe distance from overhead power lines. Medium-height trees (40 feet or smaller) should be planted at least 25 feet from power lines. Taller trees (over 40 feet) should be planted at least 50 feet from power lines. You can also practice safe planting near pad-mounted transformers. Plant shrubs at least 10 feet from the transformer door and 4 feet from the sides. If your neighborhood has underground lines, remember to contact 811 before you begin any project that requires digging. Additionally, if you spot an overgrown tree or branch that's dangerously close to overhead lines, please let us know.

We have deep roots in our community, and we love our beautiful surroundings. It takes a balanced approach, and our vegetation management program is a crucial tool in ensuring service reliability.



# From the windows, to the walls: Energy Efficiency Tax Credits

## Homeowners Can Save Up to \$3,200 Annually on Taxes for Energy Efficient Upgrades

Through 2032, federal income tax credits are available to homeowners, that will allow up to \$3,200 annually to lower the cost of energy efficient home upgrades by up to 30%.

In addition to the energy efficiency credits, homeowners can also take advantage of the modified and extended Residential Clean Energy credit, which provides a 30% income tax credit for clean energy equipment, such as rooftop solar, wind energy, geothermal heat pumps and battery storage through 2032, stepping down to 22% for 2033 and 2034.

Unlike a point-of-sale rebate, a tax credit does not reduce the purchase price of the project. Rather, it's claimed when you file your taxes and can increase your refund or reduce the amount of tax you owe. Members are encouraged to consult a tax professional to determine if they can qualify for tax credits.

### Project Specific Guidance

#### Heat pump space heating and cooling incentives

- 30% tax credit worth up to \$2,000 per year

The tax credit also applies to biomass stoves and boilers

#### Heat pump water heater incentives

- 30% tax credit worth up to \$2,000 per year

Also qualifies for a Tideland rebate of \$300

#### Electrical panel and wiring upgrade incentives

For many households, the first step toward electrification and energy savings is upgrading the electrical panel or breaker box.

- 30% tax credit worth up to \$600 per year

#### Exterior windows and doors incentives

Energy savings can literally fly out the window if windows and doors aren't air tight.

The Energy Efficient Home Improvement Credit can help you upgrade windows and doors.

- 30% tax credit worth up to \$600 per year for exterior windows and skylights, \$250 per year for one exterior door, and \$500 per year for all exterior doors

Although these incentives will be around for the next decade, energy efficiency is about long-term savings. The sooner you invest in home electrification, the more time you have to compile savings and reduce your energy footprint. Call our energy services team if you need guidance in bringing a project to fruition.

To learn more or to obtain IRS Form 5695: Residential Energy Credits, visit [energystar.gov](http://energystar.gov)

## Tideland Topics

[www.tidelandemc.com](http://www.tidelandemc.com)

### BOARD OF DIRECTORS

J. Douglas Brinson, President  
Clifton Paul, Vice President  
Mark Carawan, Secretary  
David Ipock, Treasurer  
Rudy Austin, Garry Jordan,  
Dawson Pugh, Paul Sasnett,  
Wayne Sawyer & Charles Slade

### GENERAL MANAGER & CEO

Paul Spruill

### EDITOR

Heidi Jernigan Smith

### Member Service

252.943.3046

800.637.1079

### 24 Hour Outage Reporting & Automated Services

252.944.2400

800.882.1001

Tideland EMC is an equal opportunity provider & employer



## efficiency Reminder

Change HVAC system filters monthly!

