



Tideland Topics

Real People. Real Power.

Situational awareness

Keep electric safety in mind throughout hunting season.

- Keep clear of electrical equipment
- Do not shoot at or near power lines
- Know where power lines are located where you hunt
- Never place deer stands on utility poles
- Never place decoys on power lines or equipment
- When using ATVs be on the lookout for utility guy wires



National Co-op Month

- Electric co-ops power over 21 million homes, businesses, schools and farms in 48 states .
- Nationally, electric co-op wind and solar capacity powers 3 million homes.
- Electric co-ops power 56% of the nation’s landmass. In NC, co-ops serve 93 of the state’s 100 counties.
- Co-ops returned more than \$1.5 billion in capital credits to their consumer-members in 2020.

Focused on YOU.

Electric cooperatives were created to serve their members. Because we’re a co-op, we’re able to adapt to our community’s unique needs. That’s the power of co-op membership.

OCTOBER IS NATIONAL CO-OP MONTH



Vampire power

The list of appliances and plug-in device that continue to use energy even when “shut off” grows with each passing year. It has been estimated that these standby power loads can now account for 10 percent of average monthly electric bills.

While it is part of the price we pay for the connectivity of modern technology, there are ways to reduce these vampire or phantom loads without hindering connectivity.

The simplest method is to unplug a device when you are no longer using it. The same is true for chargers that are no longer connected to a cell phone or other device.

For home entertainment equipment, consider plugging your TV and DVD player into a power strip that can be turned off when not in use. There are special entertainment center power strips that will power off only those items that don't need to regularly communicate with internet for updates or signal retention.

Be sure to activate energy saver modes that put electronics to sleep to reduce power consumption and always look for Energy Star labeling when making new purchases.

Message to our member-owners

Unclaimed member refunds can be researched online

by **PAUL SPRUILL**
GENERAL MANAGER &
CHIEF EXECUTIVE OFFICER

In late August, Tideland mailed over 2,000 “Intent to Escheat” letters were to members or former members who haven't cashed a check previously mailed to them by the co-op. The checks were generated for aged billing refunds, such as a security deposit balance due after final billing, or a December 4, 2018, capital credit general retirement check. Recipients had until September 20, 2022, to request a replacement check from the cooperative.

For those we did not hear from, the funds will now be turned over to the appropriate state treasurer's office as determined by the last known mailing address we have on file for the member. For North Carolina residents, a search for unclaimed refunds can be conducted online at nccash.com. The database is maintained by the North Carolina Department of the State Treasurer. The agency has returned more than \$105 million in escheated property in the past 12 months including co-op refunds and capital credit distributions. The search and claims submission process is done at no cost to the property owner.

North Carolina residents can search for unclaimed funds by visiting nccash.com

If an uncashed check was made payable to a deceased member the estate will need to petition the state for those funds. The estate should also complete a “Request for deceased member's capital credits” form and return it to Tideland along with a copy of the member's death certificate. If the member did not have a will or executor, the final distribution of co-op funds will be made payable to the clerk of court for distribution. You can find the estate request form on Tideland's website or call our office at 800.637.1079.

If you happen to find an uncashed capital credit check from the years 2019, 2020 or 2021 please contact the co-op so we can make arrangements to issue an updated check. Because capital credit refunds will continue to be generated for years to come it is always a good idea to periodically check your account information to make sure we have your current address on file especially if you terminate service and relocate outside of our service area.

As National Co-op Month is celebrated throughout the month of October, this is a timely reminder that co-op membership matters and it also pays in the form of shared financial equity that eventually makes its way back to your wallet. We appreciate the opportunity to serve you, your family and our member-owned businesses.

HALLOWEEN SAFETY TIPS

Curiosity leads to many things, not all of them safe. Protect children by installing Tamper Resistant Receptacles in your home. This permanent, cost-effective solution prevents injuries and deaths caused by the insertion of foreign objects into outlets.

Avoid using dried flowers, corn stalks or hay in your festive decorations. These items are highly flammable and could even be ignited by heat from a nearby lightbulb.

Inspect all electrical decorations and extension cords before use. Discard any that have cracked, frayed, or exposed wiring.

Outdoor electrical decorations are increasingly popular. To reduce your risk of shocks, Ground Fault Circuit Interrupters (GFCIs) should be used wherever water may come into contact with electrical products. Replace traditional receptacles with GFCIs or use a portable one.

Use only electrical decorations and products that have been tested and certified by a nationally recognized testing laboratory, such as UL, Intertek, or CSA

FOR MORE HALLOWEEN AND ELECTRICAL SAFETY TIPS, VISIT

www.ESFI.org
 www.youtube.com/user/esfidotorg
 www.facebook.com/ESFI.org
 <https://twitter.com/ESFIdotorg>

October rights-of-way schedule

Tideland has hired Lucas Tree Experts to trim trees in our rights-of-way. During October, Lucas will finishing trimming along our Duck Creek circuit out of our Five Points substation in Pinetown. They will then transition to the Blounts Creek circuit out of our Edward substation. If there are no major weather events they hope to get started on the Bonner-ton circuit by late October.

Lee Electric construction crews will resume work on Hyde Park Canal Road after delays were experienced due to a peat fire that took quite some time to put out. After completion of that job they will begin work on the Rose Bay circuit out of our Ponzer substation.

Safety inspections have concluded for members served by our Washington substation. We are now working on Edward substation services (Blounts Creek, Bonner-ton, Lowland and the Craven County circuits). When safety issues arise the member is notified and given a timeframe in which corrective action must take place. Most of those issues relate to vegetative upkeep of shrubs and other plant materials that obscure the meter.

Thank you for your support of each of these importance maintenance activities which promote improved service reliability and protect public safety.

Residential time-of-use peak hours change October 16

Residential time-of-use rate participants are reminded that the winter on-peak schedule begins October 16. Please observe winter on-peak hours of 6 a.m. to 9 a.m., Monday through Friday. The following winter holidays remain off-peak at this time: Thanksgiving Day, the Friday after Thanksgiving, Christmas Day, and New Years Day.

Time-of-use members will continue to pay just 8.61¢ per kilowatt hour, which is also subject to the wholesale power cost adjustment credits that remains in affect for all Tideland EMC rate payers. The on-peak demand (kWd) charge will drop from \$11.01 to \$10.06 on November 1. As was mentioned in the September issue of Tideland Topics, changes are on the horizon for the residential time-of-use rate but the revamped rate is not yet ready for launch. Our current time-of-use rate members will receive ample notification before those changes go into effect.

Heat pumps deliver more for less

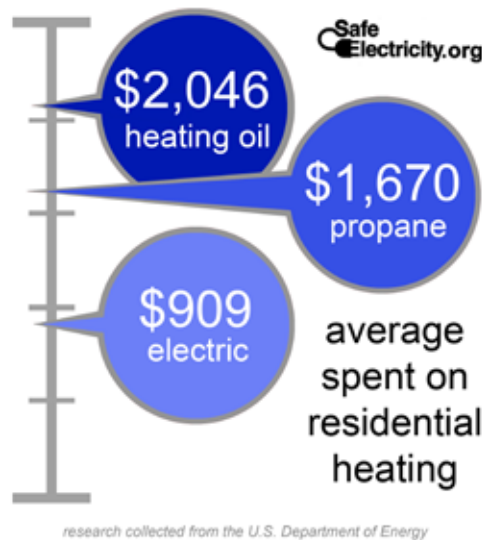
Heat pumps offer an energy-efficient and affordable alternative to furnaces and air conditioners for all climates. Like your refrigerator, heat pumps use electricity to transfer heat from a cool space to a warm space, making the cool space cooler and the warm space warmer. During the heating season, heat pumps extract heat from the outdoors and put it inside to your warm house. During the cooling season, they pump the heat inside your house into the outdoors. Because they transfer heat rather than generate heat, heat pumps can efficiently provide comfortable temperatures for your home year round.

Heat pumps require less service than fossil fuel-fired heating systems and are incredibly quiet while operating.

Tideland offers rebates for members investing in a new heat pump. The rebate is tied to the system's efficiency. The higher the efficiency the higher the rebate. Unit sizing is very important because oversized units will not adequately dehumidify your home during summer.

If you already have propane available at your residence and prefer to use it as your supplemental heat resource, we offer a \$300 rebate for dual fuel heat pumps.

For more information contact our energy services department at 252.944.2410 or email us: gogreen@tidelandemc.com



Real People.
Real Power.

Tideland Topics

www.tidelandemc.com

BOARD OF DIRECTORS

J. Douglas Brinson, President
Clifton Paul, Vice President
Mark Carawan, Secretary
David Ipock, Treasurer
Rudy Austin, Garry Jordan,
Dawson Pugh, Paul Sasnett,
Wayne Sawyer & Charles Slade

GENERAL MANAGER & CEO

Paul Spruill

EDITOR

Heidi Jernigan Smith

Member Service

252.943.3046

800.637.1079

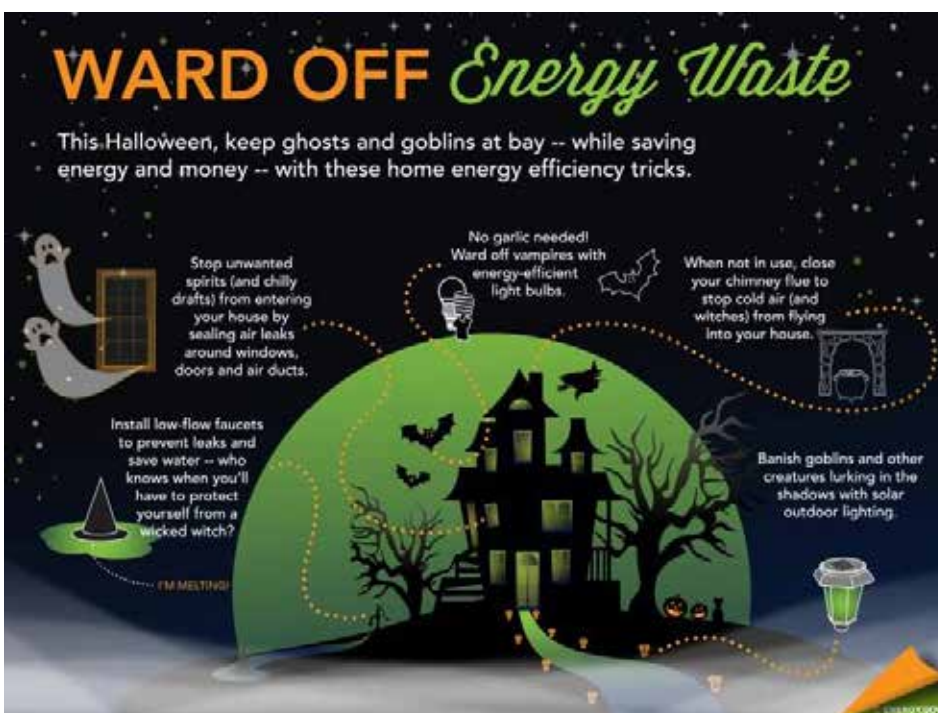
24 Hour Outage Reporting

& Automated Services

252.944.2400

800.882.1001

Tideland EMC is an equal opportunity provider & employer



MumFest 2022

October 8-9

Downtown New Bern

mumfest.com