

A scenic view of a lake with several sailboats on the water. The foreground shows the deck and rigging of a boat, with red ropes and white masts. The water is a deep blue, and the sky is a lighter blue with some clouds.

Tideland Topics

Real People. Real Power.

Class of 2020 **scholarship awards**

While their senior year was interrupted by Covid-19, that hasn't stopped our eight scholarship winners from aiming high as they continue their academic journey. Read more on Pages B and C.

Photo: Tideland scholarship recipient Kaylee Christenberry



Lake Phelps **improvements**

Thanks to the receipt of federal permits, work began in May to rebuild and reconnector 15 miles of line from Lake Phelps to the Highway 45 entrance to the Pungo Unit of the Pocosin Lakes National Wildlife refuge.

This circuit serves Smithfield Foods' feed mill in Creswell, one of our largest agribusiness accounts. Projected investment for this project is \$805,000.





Medical alert members

Tideland restores power after a hurricane at the substations first, primary circuits second, and smaller taps third. While we cannot deviate from this restoration strategy that generally restores power in order of greatest impact to members, we do maintain a "Medical Alert" list for those dependent on home medical equipment.

We currently have 275 members on the list and we are able to tailor communications and updates to these members when the risk increases for outages that are anticipated to last multiple days. We will make a special effort to communicate with our medically fragile members during hurricane recovery.

Please reach out to us at 800.637.1079 if you or a relative has special medical needs and if their household would benefit from special communications regarding the risk of longer power outages.

Saluting our college scholarship winners

Eight receive higher education awards



Kaylee Christenberry
Washington County Early College High School

Kaylee is the daughter of Joseph and Kristy Christenberry of Plymouth. She will attend Midway University in Kentucky. Her intended major is biology and pre-veterinary medicine. Kaylee's dream is to return to Washington County to serve as a large animal and livestock veterinarian.



Brent Benson
Pungo Christian Academy

Brent is the son of Mart and Anita Benson of Pantego. He will attend North Carolina State University to major in biological and agricultural engineering technology. Brent plans to continue his family's proud farming legacy after he completes college.



Sarabeth Boyd
Northside High School

The daughter of Douglas and Tammy Boyd of Pinetown, Sarabeth will be attending Meredith College in the fall. She will major in interior design and business administration with a marketing concentration. She hopes to eventually open her own interior design firm.



Spencer Peed
Pamlico County High School

Spencer is the son of Michael and Paige Peed of Aurora. He will major in construction management at East Carolina University.

This is the 20th year that the Tideland Electric Care Trust has funded college scholarships for graduating high school seniors. The Trust, a non-profit foundation, receives its funding through co-op member Operation Round Up donations along with the receipts of obsolete materials sales and other fundraising activities. If you would like to contribute to the fund, which also assists members with energy costs during a crisis situation, contact the co-op.



Parker Merritt Watson
Pamlico County High School

Parker is the son of Chris and Melissa Watson of Grantsboro. He graduated first in his class at PCHS and will attend North Carolina State University in the fall. His intended major is biomedical engineering.



Chase Williford
Mattamuskeet Early College High School

The son of Steve and Denise Williford of Engelhard, Chase will attend North Carolina State University's Ag Institute. His intended major is field crop science. After college his plans to return to Hyde County to continue family farming.



Rylee Midyette
North Carolina Cyber Academy

Rylee is the daughter of Daniel and Jenna Brinn of Scranton. She will begin her college career in the nursing program at Beaufort County Community College before transferring to East Carolina University to obtain a bachelors degree in nursing.



Logan Blackburn
West Craven High School

Logan is the son of Carlos and Kimberly Blackburn of Ernul. He will be attending Craven Community College this fall. He is exploring curriculums in engineering, machining and firefighter technology.

Right-of-way maintenance and construction schedule

Tideland has hired Lucas Tree Experts to trim trees in our right-of-way. During July they will continue trimming in Oriental, Arapahoe and Minnesott Beach.

Our construction crews with Lee Electrical will be working in the following areas:

- Carter Canal - Engelhard
- Shore Drive - Creswell
- Trent Road - Merritt
- Old Bay River Road - Grantsboro

MasTec construction crews will continue pole replacements on Pocosin, Braddy and Respass roads in Pine-town.

Osmose will be conducting pole inspections in Arapahoe, Oriental and Minnesott Beach.

Holiday closing

Tideland offices will be closed Friday, July 3, in observation of Independence Day.

On-call crews will remain available to respond to outages and service emergencies. Our 24-hour call center will also be staffed during that time.

Please enjoy the holiday weekend safely and responsibly. We care.

Expand your membership with ElecTel financing



Who is ElecTel?

Membership in ElecTel Cooperative Federal Credit Union is open to any member/consumer and their families of the 26 electric cooperatives in North Carolina.

Membership is also open to the employees, directors, and officers of the electric and telephone cooperatives in North Carolina, Virginia, Maryland, Delaware, Tennessee and West Virginia.

Unlike banks, whose primary goal is to maximize profit for a select group of stockholders, credit unions are owned and governed by members. And everyone has an equal voice.

ElecTel Cooperative FCU exists to serve your financial needs by offering a full range of affordable, easy to obtain services. Their "profits" are returned to you in the form of higher savings rates, lower loan rates, and fewer fees than you'll find at most other institutions.

Once you join your membership is good for life!

CONTACT:
Electel.org
800.849.5600



Tidelanders can tap into credit union membership for generator financing & more

Tideland EMC is excited to offer you membership in ElecTel Cooperative Federal Credit Union. ElecTel is an ideal source for financing energy related projects such as backup generators, new HVAC systems and insulation projects.

The first step is to apply for membership online at electel.org. An ElecTel member service representative will contact you to conduct the "onboarding" process to obtain proof that you are a Tideland EMC member. A copy of your bill will suffice or if you are a FlexPay member Tideland can provide verification of membership.

Once confirmed your ElecTel account is opened with as little as

a \$1 deposit. Now you are ready to begin the loan application process. Application can be made online or by mail. Proof of income and the proposal for the energy related project must be submitted.

Once terms are agreeable, loan documents will be sent for electronic signature. For members who don't have access to a smartphone or email, the documents will be mailed to your home. When loan funds are disbursed they are sent directly to the vendor/contractor.

Loan rates are based on the member's credit score and the term for which they finance. Currently ElecTel offers terms up to 10 years for energy projects.

Continues on Page H

Dorian Dollars

\$1.4 million reimbursement

Tideland has been approved for more than \$1.4 million to reimburse Hurricane Dorian-related expenses. The reimbursement includes replacing damaged transformers, poles and other critical components.

More than \$19 million has been approved by FEMA for Dorian-related expenses in North Carolina through the Public Assistance Program. FEMA reimburses applicants at least 75 percent of eligible costs, and the remaining 25 percent is covered by the state.

FEMA's share for this project is more than \$1 million and the state's share is more than \$364,900. These funds represent approximately \$70 per Tideland member.

After two years of damaging hurricanes in addition to the economic losses associated with Covid-19, we appreciate every dollar received to alleviate electric rate pressures and keep our infrastructure sound.



Crossroads cafe, catering and classes

Chef Chassitty Inman has re-opened the former Keech's Super Market and Grill on Highway 264 in Pinetown which had been vacant since October. She has rebranded it Delicious Memories Country Kitchen and Market with a nod to old favorites that include a local beef "sammich," the Keech burger, cheese biscuits and chocolate sop (that's chocolate gravy for those of you not from around here).

Chassitty has previously worked with Michelin Star Chef Pascal Coulon on the Escoffier Dinner Series. Top of her culinary class she was selected to work, study and live with some of the best chefs in the world through a highly competitive internship to France. She is also an Adjunct Instructor for Beaufort County Community College. She plans to utilize her teaching skills to offer baking and cake decorating classes at a later date. The location also gives her a base of operation for the catering aspects of her budding business.

Open for breakfast and lunch, Delicious Memories is located at 20028 US Highway 264 E, Pinetown. Link to their social media platforms by visiting deliciousmemoriesnc.com

TIPS FOR PURCHASING NEW APPLIANCES

When shopping for new appliances, there are two price tags you should consider:

1. Purchase price of the appliance (think of this as a down payment)

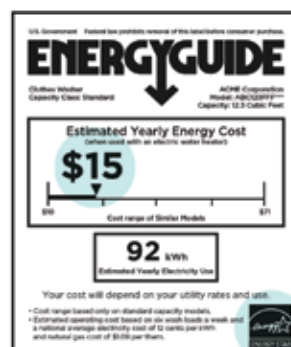


2. Cost to operate the appliance over its lifetime (how much energy the appliance uses)



That second price is important because you'll be paying for the appliance's energy use for the next 10 to 20 years.

- Look for the ENERGY STAR® label. ENERGY STAR-qualified products exceed the federal minimum standards for efficiency and quality.
- Carefully review the EnergyGuide label on the appliance. The label provides information about how much energy an appliance uses compared to similar models.
- Once you choose your make and model, compare prices. Keep in mind, many retailers will match a lower price offered by competitors.
- Recycle or sell your old appliance. Ask the retailer if they'll pick up your old appliance, or you can sell it yourself. Either option is better than the landfill!





Caring for kids

Blinks mean system is working

Blinks occur when a breaker, or switch, opens along any portion of our power system. The breaker usually opens due to a large, quick rise of electrical current. This large rise, called a fault condition, can occur when a tree branch touches a line, a squirrel climbs on a switch, lightning strikes or a wire breaks. A relay senses the fault and tells the breaker to open, preventing the flow of power to the problem site. After opening, the breaker quickly closes. The brief delay, designed to allow the fault to clear, usually lasts less than 2 seconds. If the fault clears, every home or business that receives electricity off that power line has just experienced a blink. If the fault doesn't clear the system may blink again and even a third time in hopes of avoiding an outage. If the fault is still detected after the third blink the breaker will open up, an outage will be logged and Tideland crews will begin the work of locating the fault, clearing it and restoring service.

Our system is particularly susceptible to blinks during summer due to more frequent lightning and the rapid rate of vegetative growth that occurs in warmer months. Now would be an ideal time to review your home's surge protection needs as well as your property insurance coverage.



From left to right: Winston Howell, Edgecombe-Martin EMC; Charles Guerry, Halifax EMC; Paul Spruill, Tideland EMC; Mark Suggs, Pitt and Greene EMC; and Meghan Woolard, Ronald McDonald House Charities.

Eastern electric cooperatives and CoBank donate to Ronald McDonald House



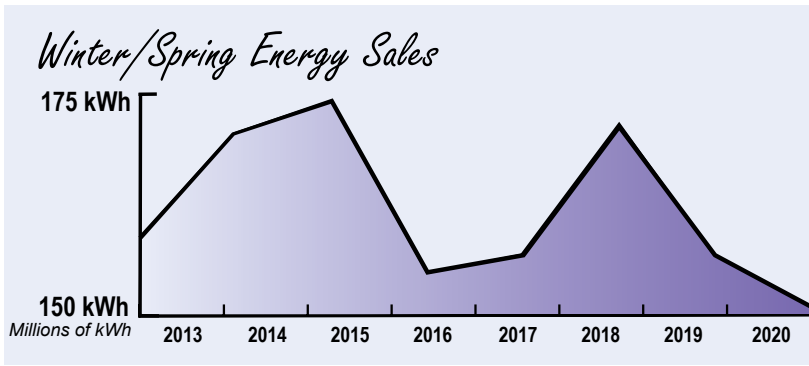
On June 2, representatives from several eastern North Carolina electric cooperatives presented a \$20,000 donation to Greenville's Ronald McDonald House. The donation was made possible thanks to a matching grant from CoBank which is a national cooperative bank providing financial services to agribusinesses

and rural power, water and communications providers in all 50 states.

The Ronald McDonald House of Eastern North Carolina (RMHENC) opened its doors in 1987, providing accommodations for families with children hospitalized at Vidant Medical Center. Since then, the house has had more than 27,000 admissions.

In 2013, RMHENC expanded its footprint with a family room inside the James and Connie Maynard Children's Hospital at Vidant Medical Center that has now grown to include six family bedrooms within the hospital.

Continues on Page H



Message to members

Record low sales year-to-date

by **PAUL SPRUILL**
GENERAL MANAGER &
CHIEF EXECUTIVE OFFICER

The first half of 2020 certainly got off to a shaky start and as we transitioned into the official start of hurricane season on June 1, two Atlantic basin storms were already in the books and another formed on June 3. Like many, you may have been looking for any sign of a silver lining. One may have in fact come in the form of low kilowatt hour consumption during the 2020 winter heating season.

The graph at the top of the page reflects cumulative kilowatt hour sales for each heating season dating back to 2013. Most of the decline in 2020 consumption took place between December 2019 and February 2020 when unusually warm temperatures dominated and 27% less home heating was required based on an indoor temperature setting of 68°F.

Change in kWh revenue Winter 2020 vs Winter 2019	
Residential	-6.47%
Small Commercial	-9.20%
Large Commercial	-4.89%

As we moved into spring, temperatures remained so unseasonably mild that NC Cooperative Extension consumer horticulture agent Gene Fox authored a piece entitled "What's wrong with my yard?" Re-

sponding to a slew of inquiries about the failure of warm-season grasses to thrive, Fox found that local soil temperatures remained in the 55 to 65 degree range mid-March to mid-May. The delayed spring warm up was a boon for most residential energy users able to delay the start of air conditioning season but probably a bust if your lawn is Bermuda, St. Augustine, centipede or zoysia grass.

Change in kWh revenue May 2020 vs May 2019	
Residential	-5.12%
Small Commercial	-26.25%
Large Commercial	-11.16%

Of course, individual electric bills aren't monolithic. While the overall trajectory this year has seen decreased consumption, your kilowatt hour use may in fact have increased compared to last year for any number of reasons. You may have been furloughed or working from home as a result of the COVID-19 crisis. Your family may have been impacted by school closures which meant remote learning at home for most students. That's one reason I repeatedly encourage members to sign up for high energy use alerts and to track your consumption via the online member portal.



Softshell crab sandwich
MJ's Country Store & Grill
6888 NC Hwy 99 North, Pantego

MJ's Country Store & Grill

A decade ago, Pungo Food Mart closed leaving the surrounding community without the convenience store they had come to rely on over a fifty year period. Fortunately, memories of the country store beckoned local high school sweethearts Jordan and Nikki Paniagua. When Jordan completed more than a decade of service in the US Air Force, the couple returned to Beaufort County and found themselves reimagining and reopening the vacant storefront, which now operates as MJ's Country Store and Grill.

With a fantastic social media presence, the location now enjoys a brisk breakfast and lunch business. The menu board includes items like the Honky Tonk burger, pickle fried chicken and pork chop sandwiches, and homestyle blue plate specials. In the cold case, you'll often find any number of freshly made favorites like pimento cheese or chicken salad. MJ's also stocks typical country store sundries along with gourmet ground coffee.

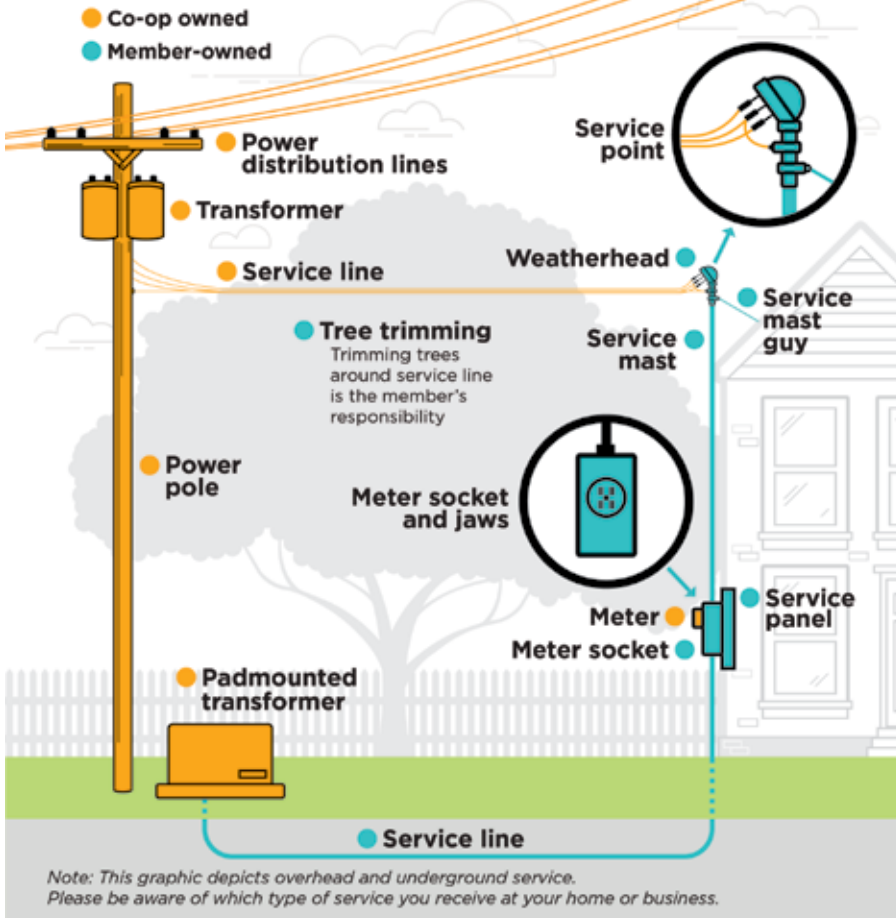
The Paniaguas recently expanded their retail footprint in an adjacent part of the building with the grand opening of County Line Outdoors selling fishing and hunting supplies.

So go "up Punga" and support this enterprising young family and veteran-owned business. Tell them Tideland sent 'ya!

Who Owns What?

Electric Co-op Owned Equipment vs Member-Owned Equipment

This graphic depicts equipment owned by the co-op (in gold) and the member (in blue). If a storm damages any equipment owned by the co-op, we are responsible for repairs. If a storm damages any member-owned equipment, the member is responsible for repairs. Members should hire a licensed electrician when making any repairs to member-owned equipment.



REAL PEOPLE.
REAL POWER.

Tideland Topics

www.tidelandemc.com

BOARD OF DIRECTORS

Paul Sasnett, President
 J. Douglas Brinson, Vice President
 Clifton Paul, Secretary
 David Ipock, Treasurer
 Rudy Austin, Mark Carawan,
 Garry Jordan, Dawson Pugh,
 Wayne Sawyer & Charles Slade

GENERAL MANAGER & CEO

Paul Spruill

EDITOR

Heidi Jernigan Smith

Member Service

252.943.3046

800.637.1079

24 Hour Outage Reporting & Automated Services

252.944.2400

800.882.1001

Tideland EMC is an equal
opportunity provider & employer



creditUnion

Continued from Page D

and rates as low as 4.9%. Energy project loans are capped at \$40,000 and require a first or second lien on the member's home when financing over \$10,000. In the case of manufactured homes, loans can be made if the member owns the land but lending is capped at \$5,000.

In the event that ElecTel is unable to provide lending services due to credit or income concerns, their member service team will attempt to identify alternative lending sources.

cooperativeDonation

Continued from Page F

Along with Tideland, the participating co-ops were Edgecombe-Martin County EMC in Tarboro, Cape Hatteras Electric Cooperative in Buxton, Roanoke Electric Cooperative in Ahoskie, Halifax EMC in Enfield, Tri-County EMC in Dudley, Pitt and Greene EMC in Farmville, Albemarle EMC in Hertford, Carteret-Craven EMC in Morehead City, and Jones-Onslow EMC in Jacksonville.

SIEMPRE
LLAMA
ANTES DE
EXCAVAR

