



Tideland Topics

Real People. Real Power.

The cable has landed

Nearly 100 tons of submarine power cable arrived at the south end of Hatteras Island on January 17. It officially marked the operational start of Tideland's project to counteract rapid coastal erosion and ensure reliable transmission service to Ocracoke. Learn more beginning on page D.

Crews transfer the cable to the modified "beach" vehicle. Daniel Pullen photos



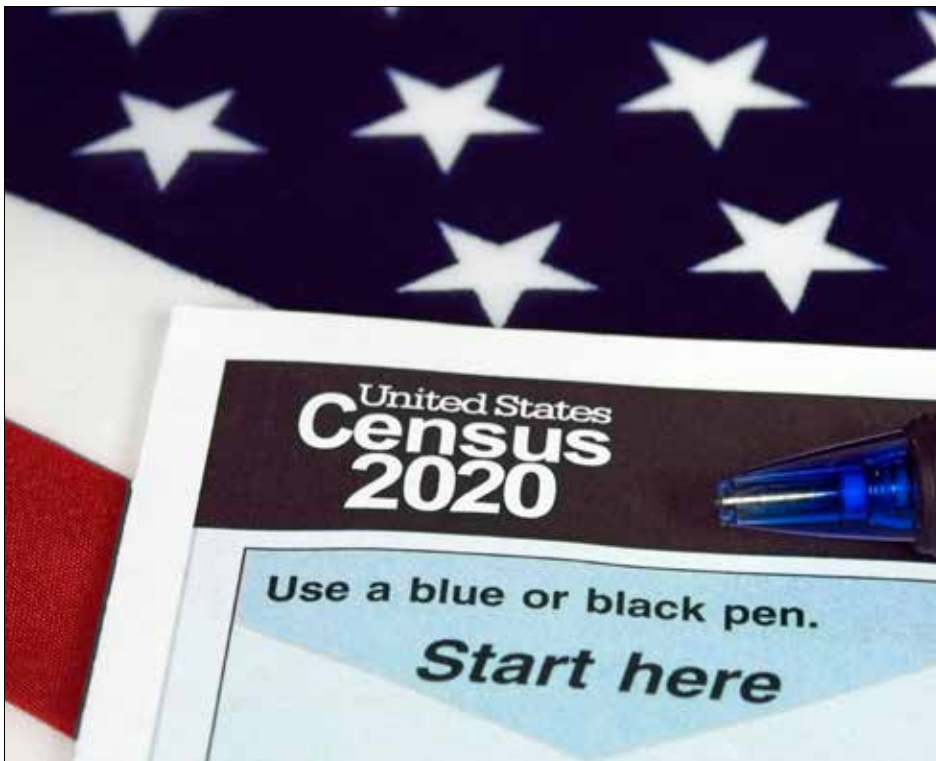
Are you down for the count?

March is the official start of the 2020 Census. Under Article 1, Section 2 of the US Constitution, the federal government is required to conduct a census of the nation's population every 10 years.

Unfortunately, rural response rates typically trail those of metropolitan areas.

In 2020, for the first time, the census will offer an avenue for online participation, with the hope this will make it easier for people to complete the questionnaire more efficiently.

Learn more beginning on Page F.





March maintenance

Tideland has hired Lucas Tree Experts to trim trees in our right-of-way. In March, they will continue work on the Merritt circuit in Merritt, Oriental and Arapahoe.

Osmose crews will also be wrapping up annual pole integrity testing. These inspections will be throughout the six-county territory based on pole age.

Spring arrives March 19. If you will be planting trees, be mindful of our utility right-of-way. Consider the mature growth of the species you select and plant at a sufficient distance from power lines so it will not impact electric service in the decades to come.

Always call 8-1-1 before you start any construction and excavation project to have all utility lines properly identified and marked.



**Know what's below.
Call before you dig.**

Spring Arrives March 19

Electrify your lawn care



Electric lawn care equipment options are becoming more popular than ever, offering consumers faster charging times, longer battery life and quieter, greener products compared to their gas-powered counterparts. Here are three ways you can electrify your lawn care this spring.

Electric Lawn Mowers

Electric lawn mowers have come a long way over the last few years. Early models required corded connections, which were tricky to manage—but the cord has been cut. Newer cordless electric mowers are certainly more expensive than gas-powered mowers, but much of the upfront cost can be recovered since electricity is a less expensive fuel than gas, and electric engines generally require less maintenance than gas engines. Cordless electric mowers typically range from \$200 to \$500.

Electric mowers are suitable for most lawn care needs, with batteries that typically require about one to two hours to fully charge, and most batteries can run for a full hour. Even if you have a large yard (half an acre or more), there may be an electric mower to suit your needs (see page 26).

Electric Trimmers

Cordless electric string trimmers are a great option for most lawns and newer versions are now considered worthy competitors of gas-powered models.

Cordless electric trimmers are much quieter and easier to use, but most batteries last about 30 to 45 minutes. So, if you have a lot

of space to trim, you may want to consider a back-up battery or plan to work in short bursts. If you're interested in purchasing an electric trimmer, the main factors to consider are the battery's life, charge time and power. Costs can vary depending on your needs, but you can find a quality version for about \$100. Corded trimmers are even less expensive and lightweight but be sure to pair it with an approved three-prong outdoor cord that is in good shape.

Electric Leaf Blowers

After cutting and trimming your lawn, you'll need to clear off those walkways and patios for the finishing touch. If you don't want to deal with the maintenance of a gas-powered blower or the restraints of a corded blower, a cordless electric version is a great option.

Cordless electric leaf blowers are lightweight and easy to maneuver, but they don't offer quite as much power as gas-powered and corded blowers. If your leaf blowing and clearing needs are minimal, a cordless electric leaf blower can get the job done. Costs for a cordless electric blower vary depending on power and battery quality, but you can purchase a dependable model for about \$150 and up.

Before shopping, do your homework. Search online for the latest reviews, and check trusted websites like ConsumerReports.org. With a little research, you'll be well on your way to Lawn of the Month – with less maintenance, hassle and noise (and your neighbors will thank you!).

Not All Heroes Wear Capes

Home Emergency Power Disconnects

The codes and standard established by the **National Fire Protection Association** are the underlying systems that keep our homes and communities safe. **The National Electrical Code®**, which is updated every three years, provides the minimum standard for safe electrical installations.

Code Approved Emergency Disconnects

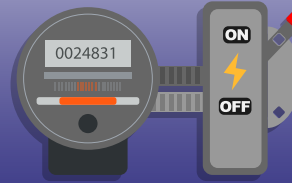
1

Service Disconnect



2

Meter Disconnect

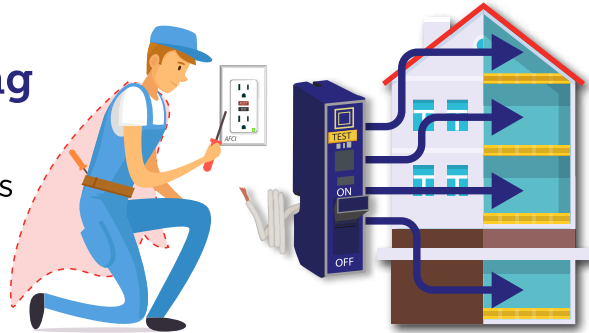


3

Listed disconnect switches or circuit breakers on the supply side of each device disconnect suitable for use as service equipment.

Arc-Fault Circuit Interrupters can Prevent Electrical Fires from Occurring

The National Electrical Code® **requires AFCI protection** for 15 and 20 amp circuits that serve outlets and devices in **all areas of new residential construction**, excluding bathrooms, garages, and outside areas. According to the CPSC, **AFCIs can prevent 50% of electrical fires.**



Section 230.85 of the 2020 National Electrical Code® **requires homes to have outdoor emergency disconnects**, allowing first responders to safely respond to emergencies without the risk of electrical hazards from the home.



- ✓ **Test** smoke alarms monthly
- ✓ **Change** battery yearly
- ✓ **Replace** alarm every 10 years

\$3.5 million submarine cable project gets underway

The long awaited start of Tideland's Hatteras Island submarine cable project finally kicked off on January 17 with the arrival of the cable itself. It was quite a journey to get there.

The cable arrived by barge in Virginia where it was then

transferred to a transport vehicle. Interestingly, the oversized load was only authorized to travel on Virginia roads after dark. In North Carolina, travel was restricted to daylight hours. The transport team camped out at the border overnight to comply with each state's travel permit.

Two cranes offloaded the cable from the transport vehicle and onto a modified "beach" truck that will move the cable along Pole Road during the burying process. A system of wooden mats, similar to those used in logging operations, is used to keep the truck moving along the



The cable arrives in Virginia.
Kerite photo



The new cable is represented in red in the image above.
Tideland EMC operations department graphic



In this series of photos, the cable is readied for off-loading from the transport vehicle. Cranes transferred it to a modified

sandy stretch of road.

By the first week of February, just over 500 feet of cable had been installed.

When complete, 10,800 feet will have been installed to connect with the existing 20,450 feet of submarine cable that crosses Hatteras Inlet to provide electric service to Ocracoke.

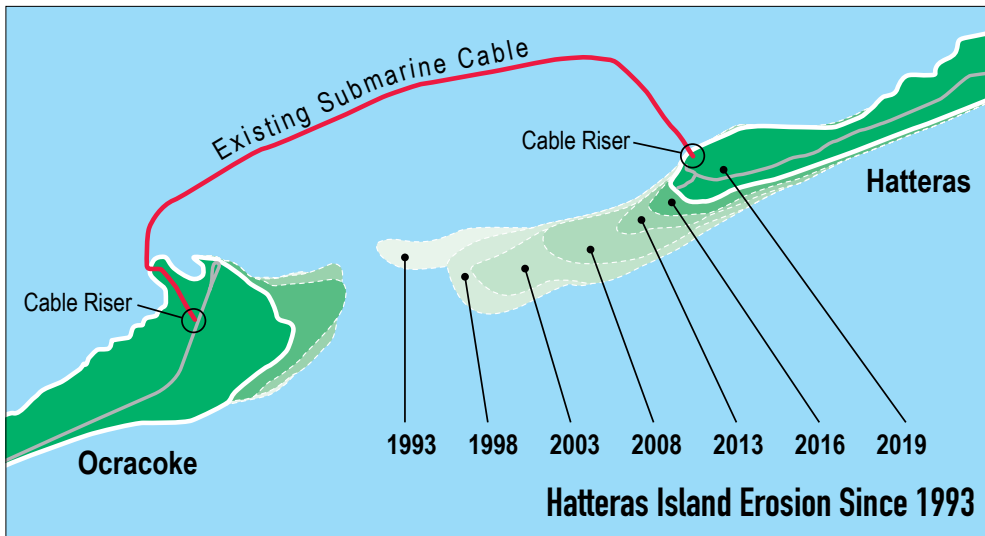
Depending on weather, the project should be complete by April.



The existing overhead line
The Island Free Press photo



Trenching and dewatering work underway.
Ben Beagle photo



A cross section of the armored cable.
Kim Fennema photo



“beach” truck that has been secured for the project. *Daniel Pullen photos*

How the 2020 Census will invite everyone to respond




Every household will have the option of responding online, by mail, or by phone.

Nearly every household will receive an invitation to participate in the 2020 Census from either a postal worker or a census worker.

 **95%** of households will receive their census invitation in the mail.



 **Almost 5%** of households will receive their census invitation when a census taker drops it off. In these areas, the majority of households may not receive mail at their home's physical location (like households that use PO boxes or areas recently affected by natural disasters).

 **Less than 1%** of households will be counted in person by a census taker, instead of being invited to respond on their own. We do this in very remote areas like parts of northern Maine, remote Alaska, and in select American Indian areas that ask to be counted in person.

(This is separate from our follow-up efforts; census takers will visit all households that were invited to respond on their own and haven't.)

Note: We have special procedures to count people who don't live in households, such as students living in university housing or people experiencing homelessness.

Message to members

Census participation critical for Tideland served communities

by **PAUL SPRUILL**
GENERAL MANAGER &
CHIEF EXECUTIVE OFFICER

The 2020 Census gets underway this month. Unfortunately, history proves that census participation tends to be lower in rural and high poverty areas. That's particularly troubling in North Carolina where more than one-third of the state's population resides in rural communities. Four of the six counties served by Tideland far outpace the state's rural population average:

- Beaufort County - 65% rural
- Hyde and Pamlico counties - 100% rural
- Washington County - 67% rural

RURAL CHALLENGES

One reason rural participation lags is due to the high percentage of rural residents utilizing post office boxes for mail delivery. The census invitation is only mailed to physical addresses. Those that can't be delivered by mail will trigger an in-person visit by a census worker who will leave an invitation at the door.

INVITATION AND RESPONSE

If you receive a census invitation but don't respond, the Census Bureau will send up to five mailings to your address and an enumerator to your door. For up to six days (with the possibility of more than one contact attempt per day), an enumerator will attempt to gather census information from someone in the household.

After each contact attempt, the enumerator will leave a "Notice

census facts

2020 Census data will help inform how billions of dollars are distributed to states and communities every year for the next 10 years.



of Visit" form encouraging households to respond via mail, phone, or online. After three days of attempting to contact someone at the address, an enumerator may begin contacting neighbors to request a proxy response for the nonresponding household.

There are four ways to complete the census:

- Online
- By mail (postage free)
- By phone
- Provide responses to an in-person enumerator.

Privacy concerns? Census records are protected by Title 13 of the U.S. Code. No data or tabulation may be produced that could be used to identify an individual.

WHAT'S AT STAKE

Why is census participation so important? The household count is used to determine the number of seats each state gets in the House of Representatives. It also provides data for redrawing legislative districts.

Lawmakers also use statistics from the census to help

continues on Page H



Beat the buzzer!

Tideland EMC is currently accepting applications for full scholarships to renowned basketball camps at two North Carolina universities this summer.

Young men can apply for a scholarship to attend the Roy Williams Basketball Camp at the University of North Carolina at Chapel Hill, and young women can apply for a spot at the Wolfpack Women's Basketball Camp held at North Carolina State University in Raleigh.*

To apply, students must be a rising sixth, seventh or eighth grade student residing in a Tideland EMC served home. Applicants will be judged on their academics, extracurricular activities and an essay.

Applications must be received by March 31. To learn more or to download an application, visit tidelandemc.com.

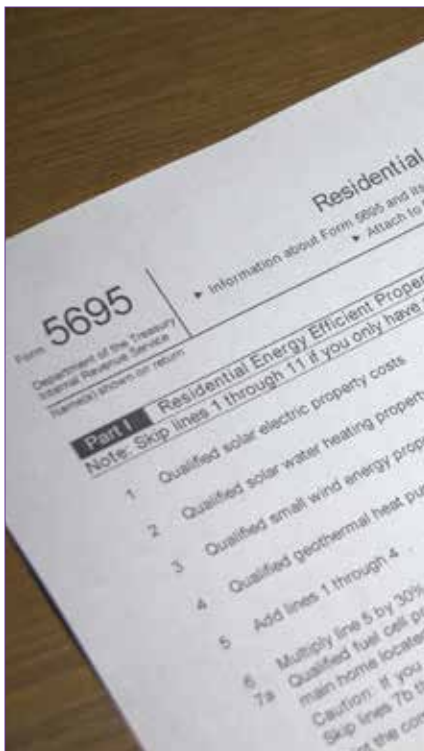
The Roy Williams camp will be held June 20-24. Dates for the Lady Wolfpack camp are June 21-24.

Credit where credit is due

Federal tax credits provide a credit valued at up to 30% of the cost of the following residential projects:

- Solar panels that generate electricity in a home
- Solar-powered water heaters that perform at least half the home's water heating
- Wind turbines that generate energy
- Geothermal heat pumps for heating and cooling
- Fuel cells that generate at least 0.5 kW and have an electricity-generating efficiency of more than 30%

To claim the credit, complete IRS Form 5695.



*Real People.
Real Power.*

Tideland Topics

www.tidelandemc.com

BOARD OF DIRECTORS

Paul Sasnett, President
J. Douglas Brinson, Vice President
Clifton Paul, Secretary
David Ipock, Treasurer
Rudy Austin, Mark Carawan,
Garry Jordan, Dawson Pugh,
Wayne Sawyer & Charles Slade

GENERAL MANAGER & CEO

Paul Spruill

EDITOR

Heidi Jernigan Smith

Member Service

252.943.3046

800.637.1079

24 Hour Outage Reporting & Automated Services

252.944.2400

800.882.1001

Tideland EMC is an equal opportunity provider & employer



efficiency Reminder

Change HVAC system filters monthly!



Down for the count?

Continued from Page C

determine how more than \$675 billion in federal funds will be spent over the next 10 years.

Funds influenced by census statistics are used for critical infrastructure and public services such as roads and bridges as well as water and

and child abuse programs, rural business development, and housing preservation.

NO CHILD LEFT BEHIND

One of the most underrepresented populations in the census is children. An estimated five percent of kids under the age of five weren't counted in the 2010 census. That's about 1 million young children. That can have serious implications on the following programs: Supplemental Nutritional Assistance Program (SNAP); the National School Lunch Program; and the Children's Health Insurance Program (CHIP).


If child custody arrangements are fluid, then count the child in the residence they stayed at on April 1 which is considered official Census Day.

NO INVITATION?

If you do not receive a census invitation and are not visited by an enumerator, visit www.2020census.gov to follow up with the Census Bureau.

census facts

The Census Bureau is bound by Title 13 of the U.S. Code to keep your information confidential.



waste disposal systems. It also impacts funding for hospitals and health care clinics, emergency preparedness and response, support for fire fighters, school lunches and education, domestic violence